

LENNOX[®]

HEARTH PRODUCTS

INSTALLATION INSTRUCTIONS

WARMING SHELVES KIT

FOR MODELS: CI1500 SERIES & CI2500 SERIES

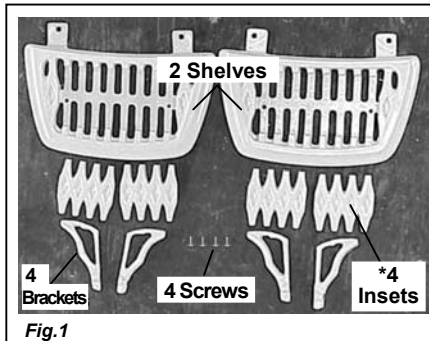
KIT CONTENTS:

- 2 ea. Warming Shelves
- 4 ea. Decorative Brackets
- 4 ea. Insets (CI1500 Series)
- 6 ea. Insets (CI2500 Series)
- 4 ea. Screws, 6mm x 20mm
- 1 ea. Instruction Sheet

TOOLS REQUIRED:

Phillips Screwdriver

* The CI1500DVF Series Kit includes 4 insets.
The CI2500DVF Series Kit includes 6 insets.



CAT.#	MODEL	DESCRIPTION
H0757	WS-CI150	CI1500 Painted Black
H0758	WS-CI152	CI1502 Midnight Blue
H0759	WS-CI154	CI1504 Majolica Brown
H0760	WS-CI156	CI1506 Hunter Green
H2159	WS-CI158-2	CI1508 Ivory White
H0762	WS-CI250	CI2500 Painted Black
H0763	WS-CI252	CI2502 Midnight Blue
H0764	WS-CI254	CI2504 Majolica Brown
H0765	WS-CI256	CI2506 Hunter Green
H2158	WS-CI258-2	CI2508 Ivory White

INSTALLATION INSTRUCTIONS:

CAUTION: THE CAST IRON STOVE TOP IS VERY HEAVY AND MAY REQUIRE A MINIMUM OF TWO PEOPLE TO LIFT; ONE PERSON ON EACH SIDE (THE CI1500 SERIES CAST TOP WEIGHS ~20 POUNDS AND THE CI2500 SERIES CAST TOP WEIGHS ~40 POUNDS).

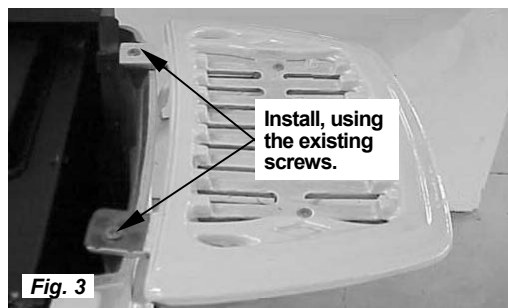
1. Lift off trivet, then stove top and set aside (see Fig. 6).
2. Install decorative brackets to both warming shelves using the screws provided.

Assemble Shelves to Brackets



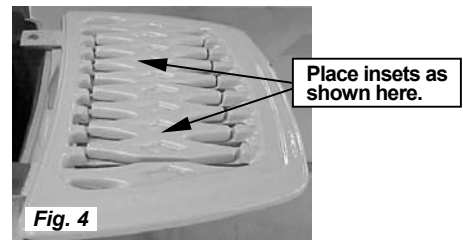
3. Using the existing screws on the stove body, install both warming shelf assemblies as shown in Figure 3. Tighten screws just enough to level shelves.

Installing onto Stove Body



4. Place the insets (4 ea. for the CI1500 series or 6 ea. for the CI2500 series) into the recessed areas on both warming shelves as shown in Figures 4 & 5. **Note: Common ceramic tiles (4 1/4" square) can be used in place of insets on the warming shelves (available at most home improvement stores).**

Install Insets



Top View of Warming Shelves Installed



5. Reinstall stove top into position.



Proper Use Instructions:

These attractive shelves are designed to be functional for placing food to stay warm. For cleaning instructions see *Cleaning Enamel Surfaces* on page 4 of the Homeowners Manual.

IMPORTANT NOTES:

- NEVER PLACE ANYTHING ON THE SHELVES WITH A WEIGHT THAT EXCEEDS 80 POUNDS (36 KILOGRAMS).
- NEVER PLACE FOOD CONTAINERS OR OTHER MATERIALS ON THE SHELVES THAT MAY BE SUBJECT TO MELTING.

NOTE: DIAGRAMS & ILLUSTRATIONS NOT TO SCALE.

LENNOX reserves the right to make changes at any time, without notice, in design, materials, specifications, prices and also for discontinued colors, styles and products. Consult your local distributor for fireplace code information.